

Ceribell Headband Instructions for Use

ceribell®

24/7 Tech Support: 1-800-763-0183

1



SUPPORT PATIENT'S HEAD

- Place a pillow or rolled towel behind the patient's neck to reduce pressure on electrode 5 and 10 if patient is lying

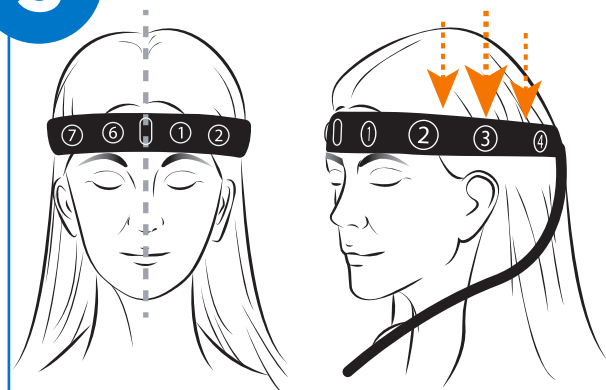
2



PULL HAIR BACK

- Remove glasses and hair accessories
- Tuck hair behind ears

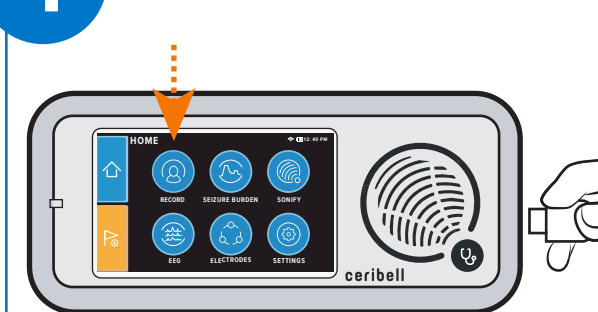
3



PLACE HEADBAND

- Close clasp centered on forehead, with cable oriented downwards
- Slide down to just above ears

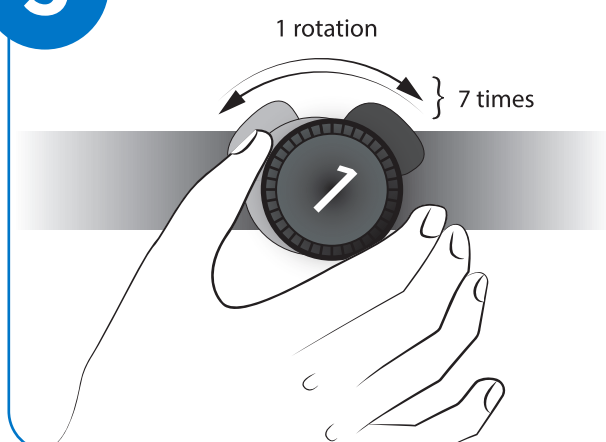
4



PLUG INTO DEVICE

- Plug headband cable into EEG device
- Go to the RECORD page, enter patient information, and proceed to the ELECTRODE page

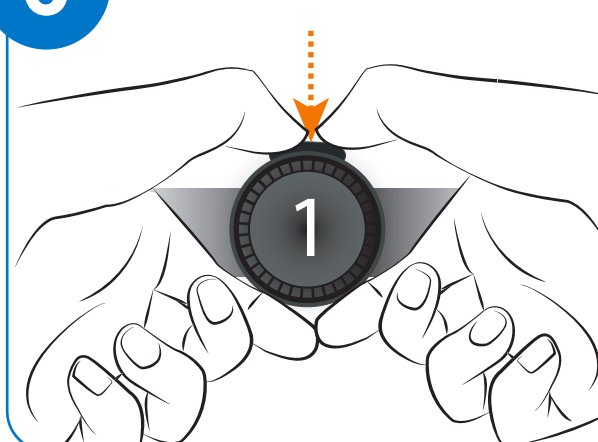
5



PREPARE ELECTRODE 1

- Rotate ELECTRODE 1 back and forth to complete a full rotation
- Repeat for 7 rotations

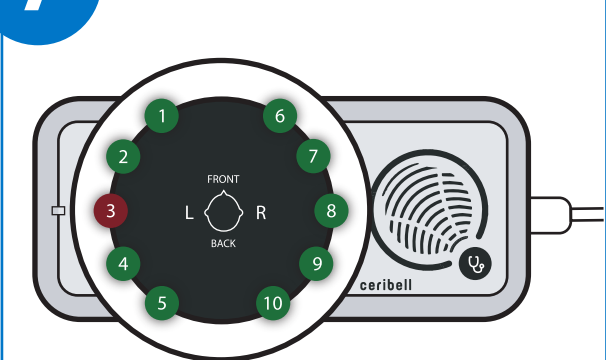
6



DISPENSE GEL

- Return electrode to upright position
- Squeeze plunger firmly to dispense gel
- Repeat Step 5 and 6 on other electrodes

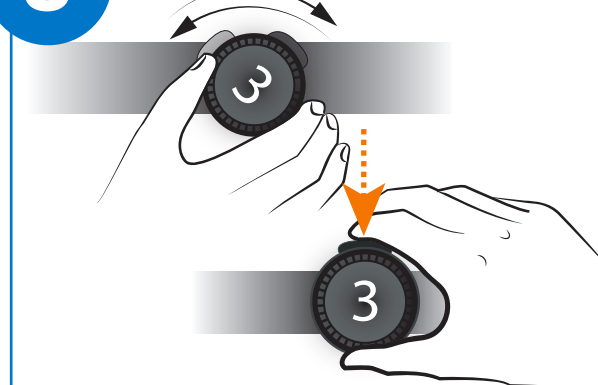
7



CHECK DEVICE

- Electrode(s) with poor signal will appear red and must be fixed

8



FIX ELECTRODES

- To fix electrodes, repeat rotations then squeeze plunger to dispense more gel
- Repeat as needed until all electrodes on device appear green

ADDITIONAL INFORMATION, PRECAUTIONS, AND WARNINGS



Use outside of the prescribed head circumference range will significantly negatively impact device effectiveness and the reliability of the resulting data, which may lead to misdiagnosis.



MR Unsafe. Remove headband from patient prior to performing Magnetic Resonance Imaging (MRI).



If skin irritation is noted, stop use and remove headband.



Only connect the headband to the Ceribell EEG Device

Medium Size: 53.3 to 62.0 cm Head Circumference
Small Size: 45.1 to 54.5 cm Head Circumference

Training:



- Monitor the electrode connections regularly during the EEG recording session.
- If an electrode connection needs to be improved, follow Step 8 to rotate the electrode additional times and dispense additional gel. If still unsuccessful, consider using a new headband.
- More conductive gel can also be added using the gel filling port on top of the electrode plunger. Use a syringe to add gel through this port.
- If needed, additional gel can also be directly added between the patient's scalp and the electrode.
- For additional gel, Ceribell recommends the use of SignaGel Electrode Gel, available from Parker Laboratories, Inc. (www.parkerlabs.com/signagel.asp)
- Operating temperature range: 15°C to 32°C
- Not made with natural rubber latex.
- Dispose of contents/container in accordance with federal, state, regional, local and/or hospital rules and regulations.
- Frequent checks for skin irritation should be performed when the device is used in infants and pediatric patients.
- Do not use on patients with a known history of skin allergies to parabens.

Indications for Use: The Ceribell EEG Headband is an electroencephalogram (EEG) electrode array intended for single patient use in the recording of EEGs. The EEG Headband is intended for prescription use in the home, healthcare facility, or clinical research environment.